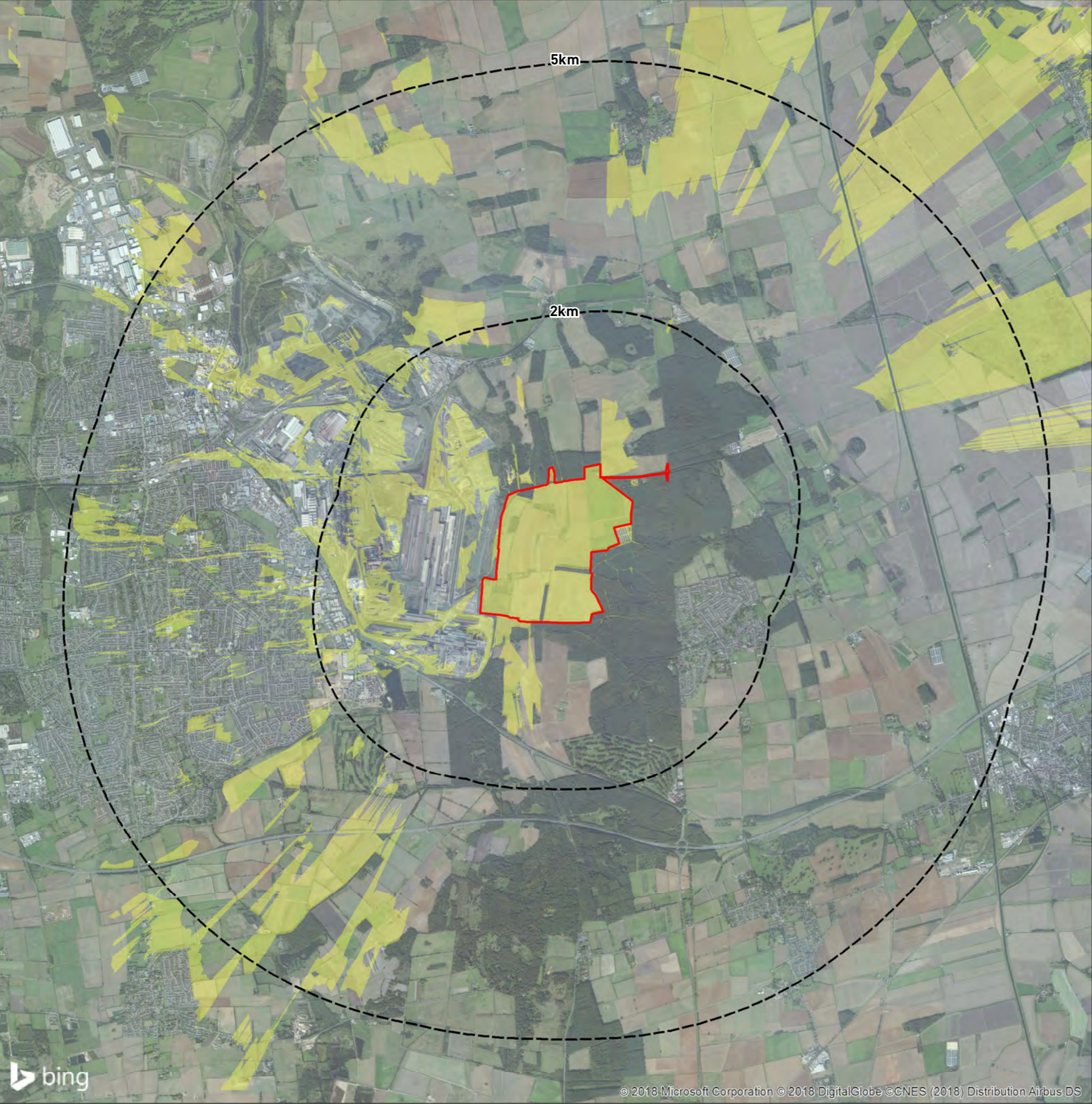


## **APPENDIX 6.1**

### **SITE CONTEXT**



KEY

- Site Boundary
- Screened ZTV - 3m Development Height

Screened ZTV Production Information -  
- DTM data used in calculations is OS Terrain 5 that has been combined with OS Open Map Local data for woodland and buildings to create a Digital Surface Model (DSM).

- Indicative Woodland and Building heights are modelled at 15m and 8m respectively.
- Viewer height set at 1.7m
- Calculations include earth curvature and light refraction

N.B. This Zone of Theoretical Visibility (ZTV) image illustrates the theoretical extent of where the development will be visible from, assuming 100% visibility, and includes the screening effect from vegetation and buildings, based on the assumptions stated above.

Revisions:  
First Issue- 22/01/2018 JS  
A - (31/07/2018 JS) Boundary updated  
B - (20/11/2018 AD) Revised red line

Figure 6.1 Site Context

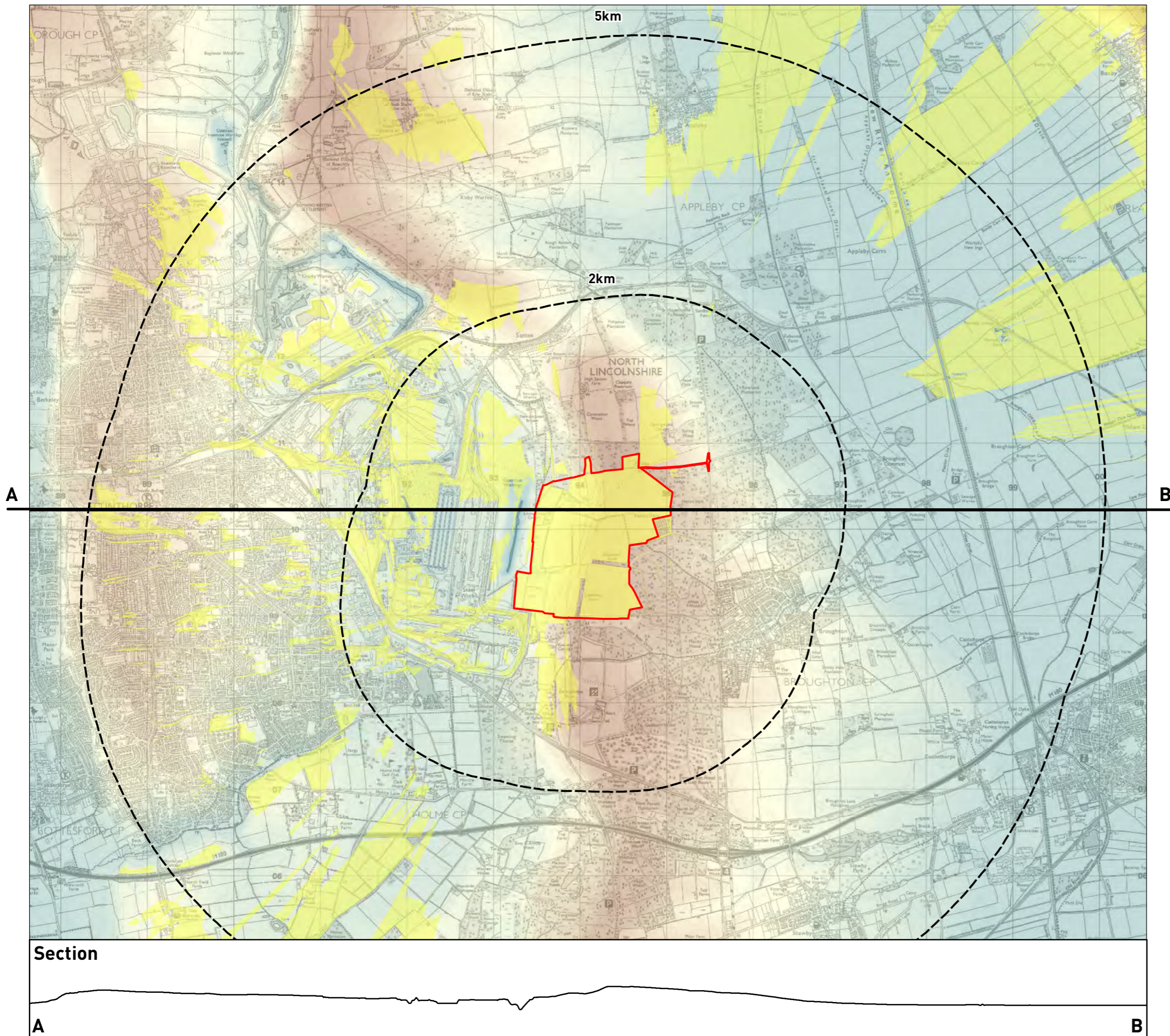
Little Crow Solar Park,  
Scunthorpe

Client: INRG Solar Ltd  
DRWG No: **P17-0718\_03** Sheet No: - REV: **B**  
Drawn by: AD Approved by: KC  
Date: 20/11/2018  
Scale: 1:50,000 @ A3  
1:25,000 @ A1



## **APPENDIX 6.2**

### **TOPOGRAPHY**



## KEY

- Site Boundary
- Screened ZTV - 3m Development Height

DTM (metres above ordnance datum)

High : 82.2423



Low : -12.91

Screened ZTV Production Information -  
- DTM data used in calculations is OS Terrain 5 that has been combined with OS Open Map Local data for woodland and buildings to create a Digital Surface Model (DSM).

- Indicative Woodland and Building heights are modelled at 15m and 8m respectively.
- Viewer height set at 1.7m
- Calculations include earth curvature and light refraction

N.B. This Zone of Theoretical Visibility (ZTV) image illustrates the theoretical extent of where the development will be visible from, assuming 100% visibility, and includes the screening effect from vegetation and buildings, based on the assumptions stated above.

Revisions:  
First Issue- 22/01/2018 JS  
A - [31/07/2018 JS] Boundary amended  
B - [20/11/2018 AD] Revised red line

## Figure 6.2 Topography

### Little Crow Solar Park, Scunthorpe

Client: INRG Solar Ltd  
DRWG No: **P17-0718\_04** Sheet No: - REV: **B**  
Drawn by: AD Approved by: KC  
Date: 20/11/2018  
Scale: 1:45,000 @ A3



## Section

A

B

PLANNING | DESIGN | ENVIRONMENT | ECONOMICS

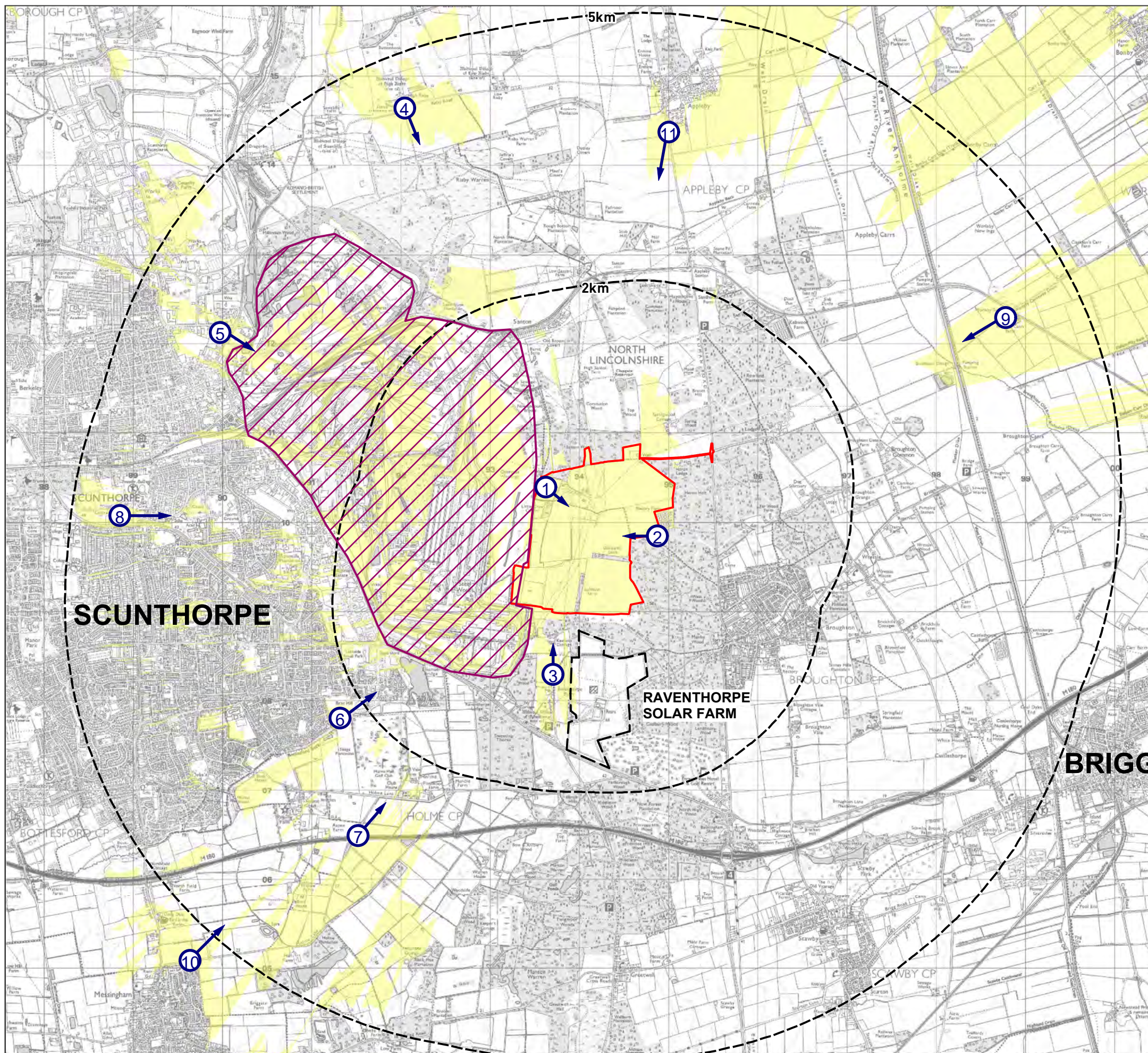
Copyright Pegasus Planning Group Ltd. Crown copyright. All rights reserved. 2017 Emapsite Licence number 0100031673. Ordnance Survey Copyright Licence number 100042093. Promap Licence number 100020449. Pegasus accepts no liability for any use of this document other than for its original purpose, or by the original client, or following Pegasus' express agreement to such use. T 01285 641717 www.pegasuspg.co.uk

0 2 km



## **APPENDIX 6.3**

### **LVIA VIEWPOINTS**



- KEY**
- Site Boundary
  - Screened ZTV - 3m Development Height
  - Industrial area with no publicly accessible viewing points
  - 1 Proposed Assessment Viewpoints

Screened ZTV Production Information -  
 - DTM data used in calculations is OS Terrain 5 that has been combined with OS Open Map Local data for woodland and buildings to create a Digital Surface Model (DSM).

- Indicative Woodland and Building heights are modelled at 15m and 8m respectively.
- Viewer height set at 1.7m
- Calculations include earth curvature and light refraction

N.B. This Zone of Theoretical Visibility (ZTV) image illustrates the theoretical extent of where the development will be visible from, assuming 100% visibility, and includes the screening effect from vegetation and buildings, based on the assumptions stated above.

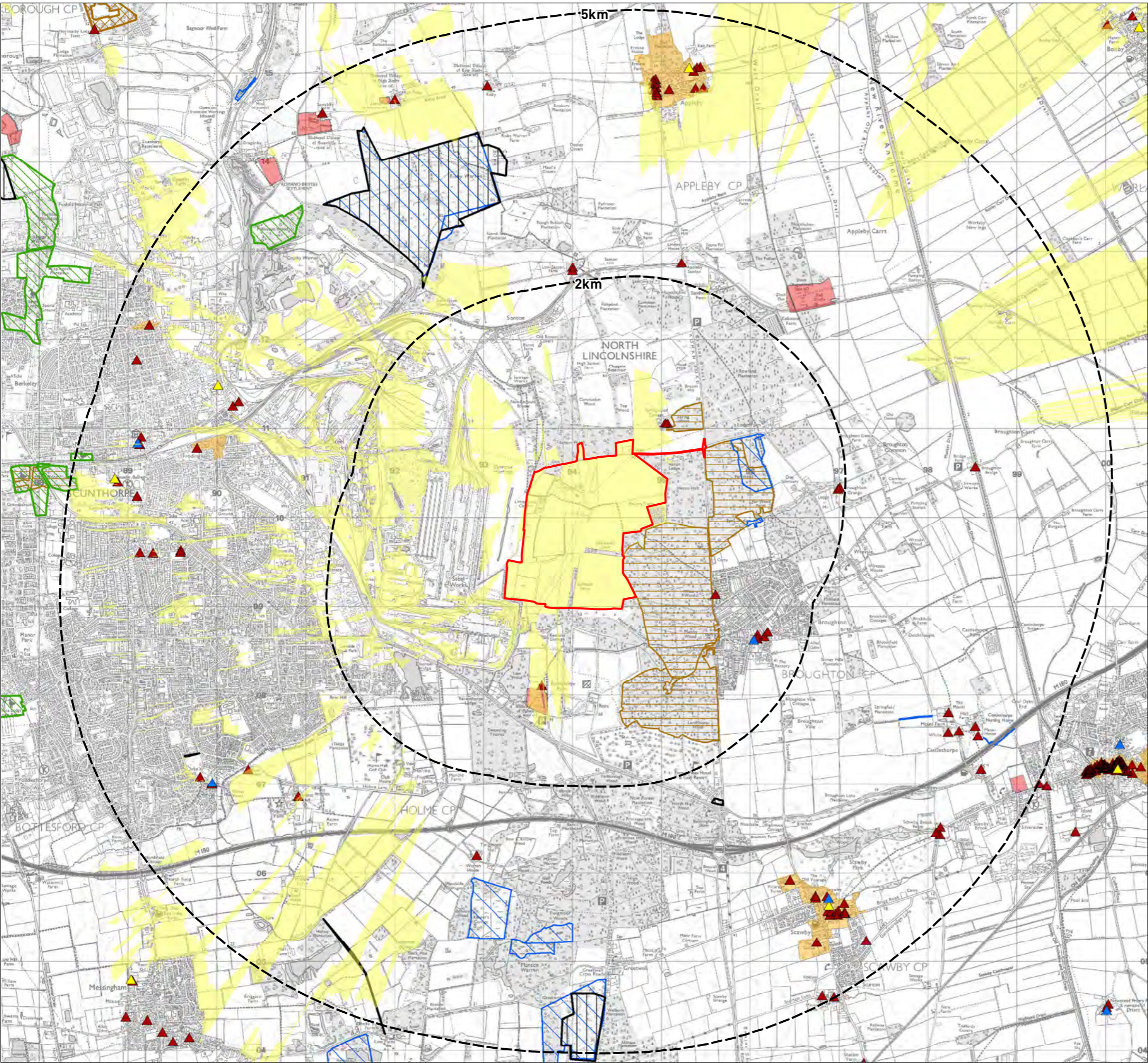
**FIGURE 6.3 -  
LVIA VIEWPOINTS**  
**LITTLE CROW SOLAR PARK**

Client: INRG Solar Ltd  
 DRWG No: P17-0718\_02 REV: B  
 Drawn by : CB                      Approved by: DT  
 Date: 15/09/2017



## **APPENDIX 6.4**

### **ENVIRONMENTAL DESIGNATIONS**



**KEY**

Site Boundary

Screened ZTV - 3m Development Height

Open Access Land / Registered Common Land

Grade I Listed Building

Grade II\* Listed Building

Grade II Listed Building

Country Park

Scheduled Monument

Local Nature Reserve (LNR)

Site of Special Scientific Interest (SSSI)

Ancient Woodland

Conservation Area

Screened ZTV Production Information -  
- DTM data used in calculations is OS Terrain 5 that has been combined with OS Open Map Local data for woodland and buildings to create a Digital Surface Model (DSM).  
  
- Indicative Woodland and Building heights are modelled at 15m and 8m respectively.  
- Viewer height set at 1.7m  
- Calculations include earth curvature and light refraction

N.B. This Zone of Theoretical Visibility (ZTV) image illustrates the theoretical extent of where the development will be visible from, assuming 100% visibility, and includes the screening effect from vegetation and buildings, based on the assumptions stated above.

Revisions:  
First Issue- 22/01/2018 JS  
A - (31/07/2018 JS) Boundary amended  
B - (20/11/2018 AD) Revised red line

**Figure 6.4**  
**Environmental Designations Plan**

**Little Crow Solar Park,  
Scunthorpe**

Client: INRG Solar Ltd

DRWG No: **P17-0718\_05** Sheet No: - REV: **B**

Drawn by: AD Approved by: KC

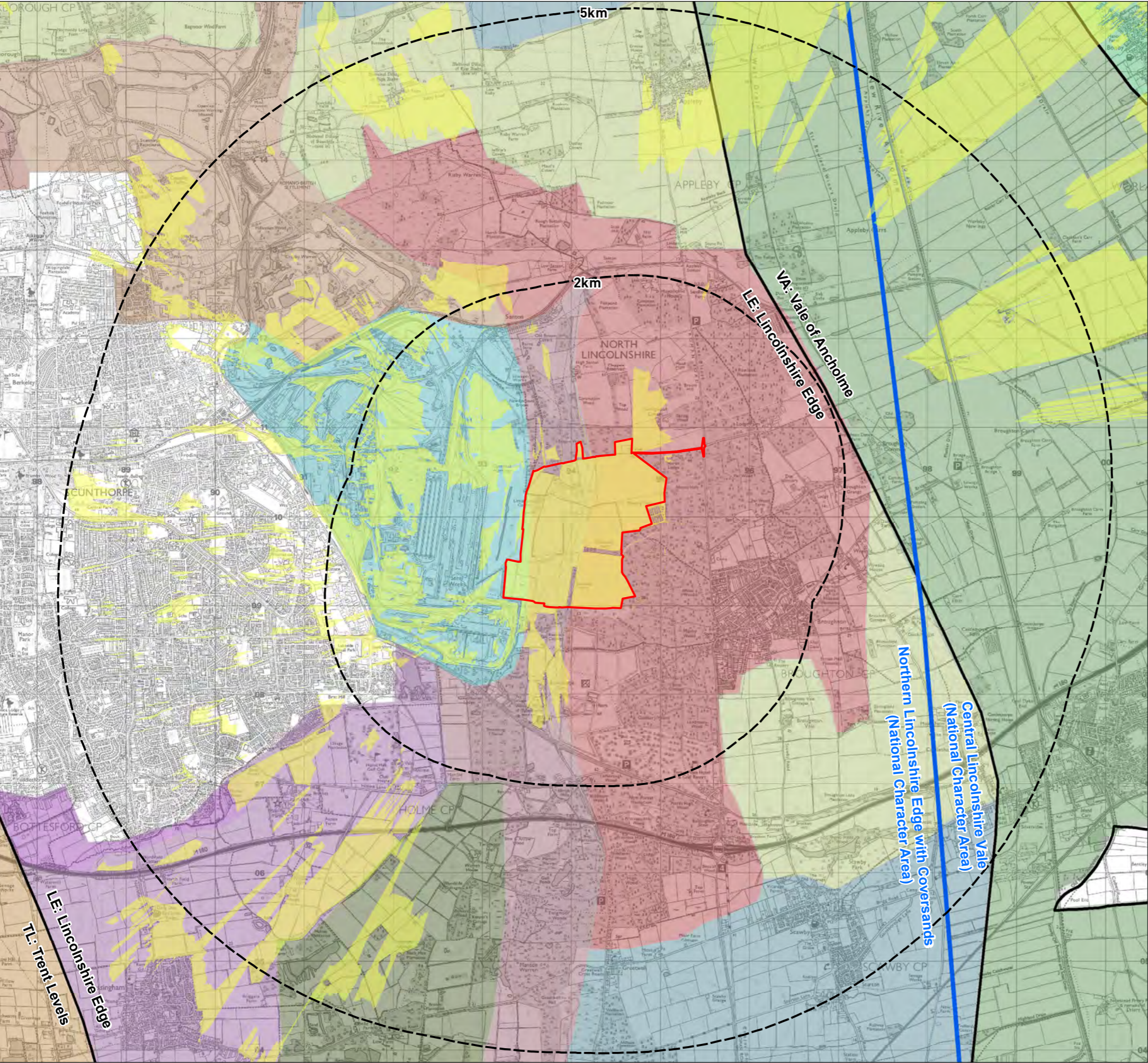
Date: 20/11/2018

Scale: 1:45,000 @ A3

**Pegasus**  
Environment

## **APPENDIX 6.5**

### **LANDSCAPE CHARACTER AREAS**



KEY

Site

Screened ZTV - 3m Development Height

National Landscape Character Areas

Regional Character Areas - North Lincolnshire Landscape Charcter Assessment (1999)

North Lincolnshire Landscape Character Assessment (1999)

Local Landscape

Despoiled Landscape

Elevated Open Farmland

Elevated Wooded Farmland

Farmed Urban Fringe

Flat Valley Bottom Farmland

Heathy Woodland

Industrial Landscape

Open Undulating Farmland

Steep Wooded Scarp Slope

Wooded Farmed Scarp Slope

Wooded Scarp Slope

Wooded Springline Farmland

Wooded Undulating Farmland

Screened ZTV Production Information -  
- DTM data used in calculations is OS Terrain 5 that has been combined with OS Open Map Local data for woodland and buildings to create a Digital Surface Model (DSM).

- Indicative Woodland and Building heights are modelled at 15m and 8m respectively.
- Viewer height set at 1.7m
- Calculations include earth curvature and light refraction

N.B. This Zone of Theoretical Visibility (ZTV) image illustrates the theoretical extent of where the development will be visible from, assuming 100% visibility, and includes the screening effect from vegetation and buildings, based on the assumptions stated above.

Revisions:  
First Issue- 22/01/2018 JS  
A - (31/07/2018 JS) Boundary amended  
B - (20/11/2018 AD) Revised red line

Figure 6.5  
Landscape Character Areas

Little Crow Solar Park,  
Scunthorpe

Client: INRG Solar Ltd

DRWG No: P17-0718\_06

Drawn by: AD

Date: 20/11/2018

Scale: 1:45,000 @ A3

Sheet No: -

REV: B

Approved by: KC

**Pegasus**  
Environment